

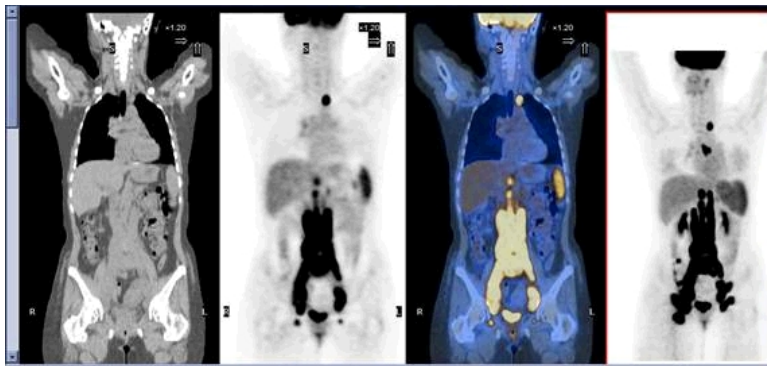
# PETIMAGING

## INTEGRATED PET/CT SCANNING

### CASE STUDY N<sup>o</sup> 43

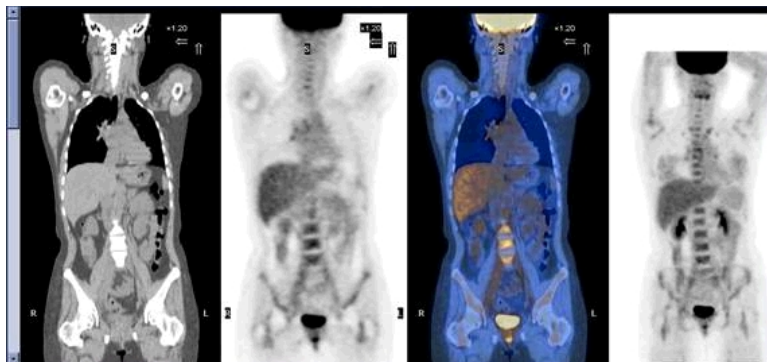
## Accurately Tracking Patient Response To Therapy

Staging PET/CT on 9-9-04



43 year old female diagnosed with Non-Hodgkin's lymphoma by a right inguinal lymph node biopsy. Initial PET/CT showed extensive multiple foci in the abdomen, pelvis, groin, and a single focus in the right anterior chest wall.

Treatment Assessment PET/CT on 10-21-04



Another PET/CT was ordered one month later to assess response to therapy. It demonstrated marked improvement with interval complete resolution of hypermetabolic foci in the abdomen, pelvis, groin, and right anterior chest wall.

Foci were seen in the mediastinum and left hilum, indicating a small amount of residual active malignancy.