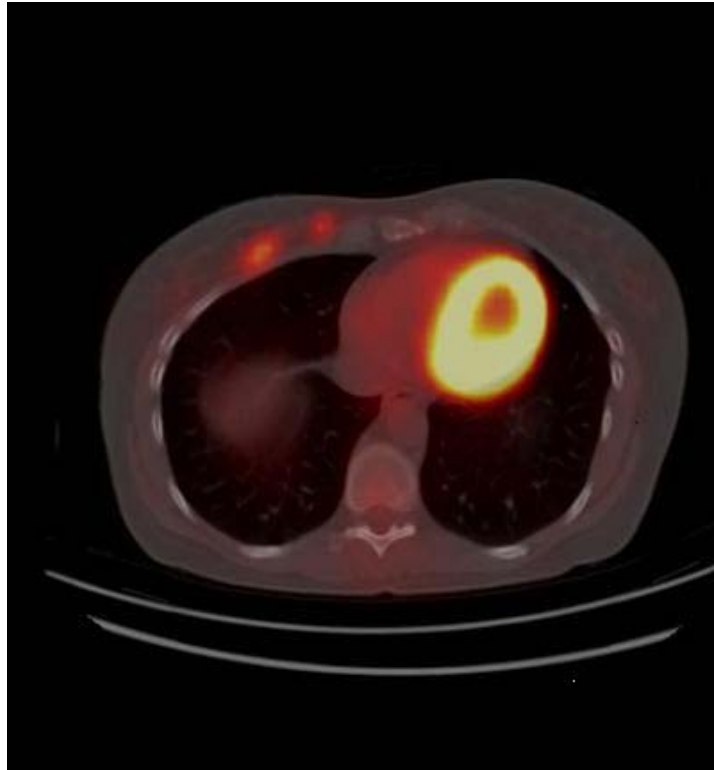


PETIMAGING

INTEGRATED PET/CT SCANNING

CASE STUDY N^o 46

Breast Cancer Staging



A 45 year old woman presents with a lump in her right breast. Mammogram and sonogram detect the 1.5 cm mass, and a needle biopsy confirms a diagnosis of breast cancer. A PET/CT, ordered to stage the cancer, reveals a second 7 mm dumbbell shaped lesion which has been undetected by other imaging modalities.