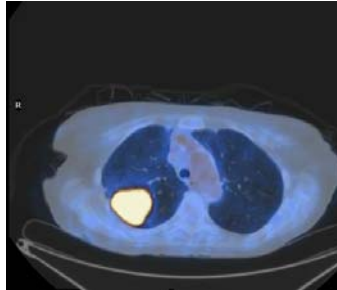


# PETIMAGING

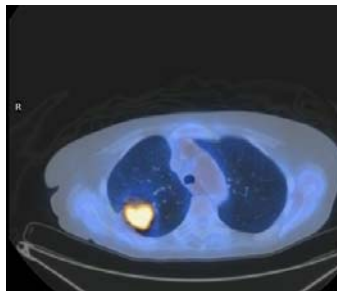
## INTEGRATED PET/CT SCANNING CASE STUDY N<sup>o</sup> 50

### Effective Use of PET/CT to Direct the Course of Therapy

In April a patient is first referred for a PET/CT for initial staging of right upper lobe carcinoma. The mass has a maximum SUV of 15.3 and measures 5.0 x 3.8 cm.



In June of the same year, a PET/CT performed after 6 cycles of chemotherapy reveals that the patient has a partial response to therapy as the SUV decreases to 7.2 and the tumor shows a reduction in size to 4.3 x 3.3 cm.



Three months later, another PET/CT after additional chemotherapy reveals that the patient continues to respond as the SUV decreases again to 3.6, and the tumor is reduced in size, measuring 3.8 x 1.8 cm.

