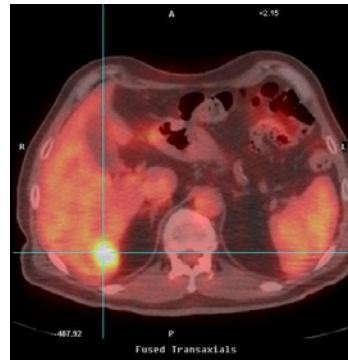
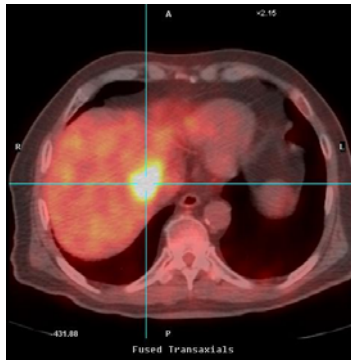


PETIMAGING

INTEGRATED PET/CT SCANNING CASE STUDY N^o 70

Colorectal Cancer: Post-resection

A 75 year old male is diagnosed with adenocarcinoma of the cecum during a routine colonoscopy. CT scans indicate possible liver metastases including 2 lesions measuring 1.9 x 1.9 cm and 1.5 x 2.2 cm respectively. The patient undergoes surgical resection, and no liver “tumors are felt or seen at open surgery”. One month later, PET/CT ordered for post-surgical staging demonstrates that the two lesions previously discovered on CT scan have increased in size and are intensely hypermetabolic. The first lesion now measures 2 x 4 cm, and the second, 1.7 x 2.8 cm.



As well, in the pericolic gutter, a soft tissue density measuring 1.3 x 2.6 cm which localizes to nodal tissue and infiltrative changes in the adipose tissue also show intense hypermetabolic activity.

