

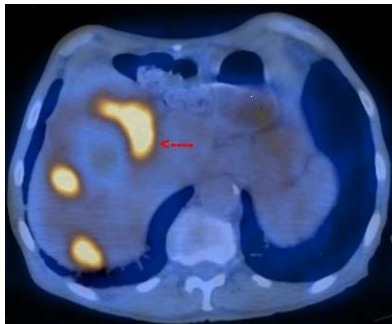
PETIMAGING

INTEGRATED PET/CT SCANNING CASE STUDY N^o 86

Progressive Liver Lesions Secondary to Colon Cancer

A 76 year old man with a history of colon cancer is status post liver and colon resection, hepatic cryoablation, chemotherapy and radiation treatment. PET/CT ordered to restage reveals extensive hepatic metastases. The patient begins a new chemotherapy regimen.

September



Three months later, PET/CT ordered post-chemotherapy identifies progression of disease around the cryoablation site with an SUV of 13.3 as compared to 9.3 on the previous scan. As well, a lesion in the dome of the liver which is stable in size on CT shows increased metabolic uptake from 7.0 to 10.7, and another lesion in the inferior aspect of the liver has grown in size from 3.4 cm to 4.3 cm with persistent metabolic activity. A fourth lesion has increased in both size (1.1 to 1.6 cm) and metabolic activity (SUV of 3.3 to 4.0). The patient begins a different chemotherapy regimen.

December

