

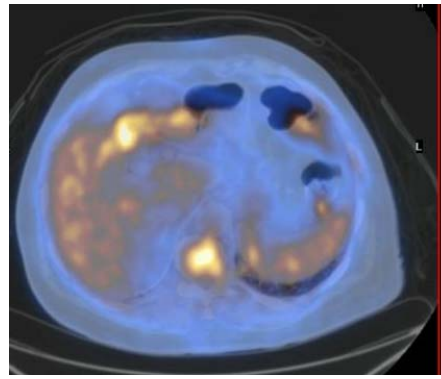
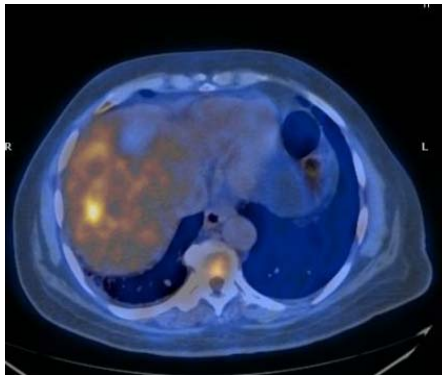
PETIMAGING

INTEGRATED PET/CT SCANNING CASE STUDY N^o 87

Metastatic Colorectal Cancer

An 82 year old male with a history of colon cancer previously treated with resection of the primary and ablation of liver metastases presents with symptoms of recurrence. A restaging PET/CT reveals persistent disease in the liver as well as two metabolically active pulmonary nodules. The patient begins chemotherapy.

December



PET/CT, ordered to restage the cancer after chemotherapy, reveals interval growth of the liver lesions including enlargement of a lesion in the right lobe of the liver from 1 cm to 1.6 cm with an increased SUV from 4.3 to 4.8. As well, a pulmonary lesion, barely perceptible on the previous scan, now measures 1.4 cm with an SUV of 4.1. Four additional pulmonary sites have increased in size and intensity as well.

March

