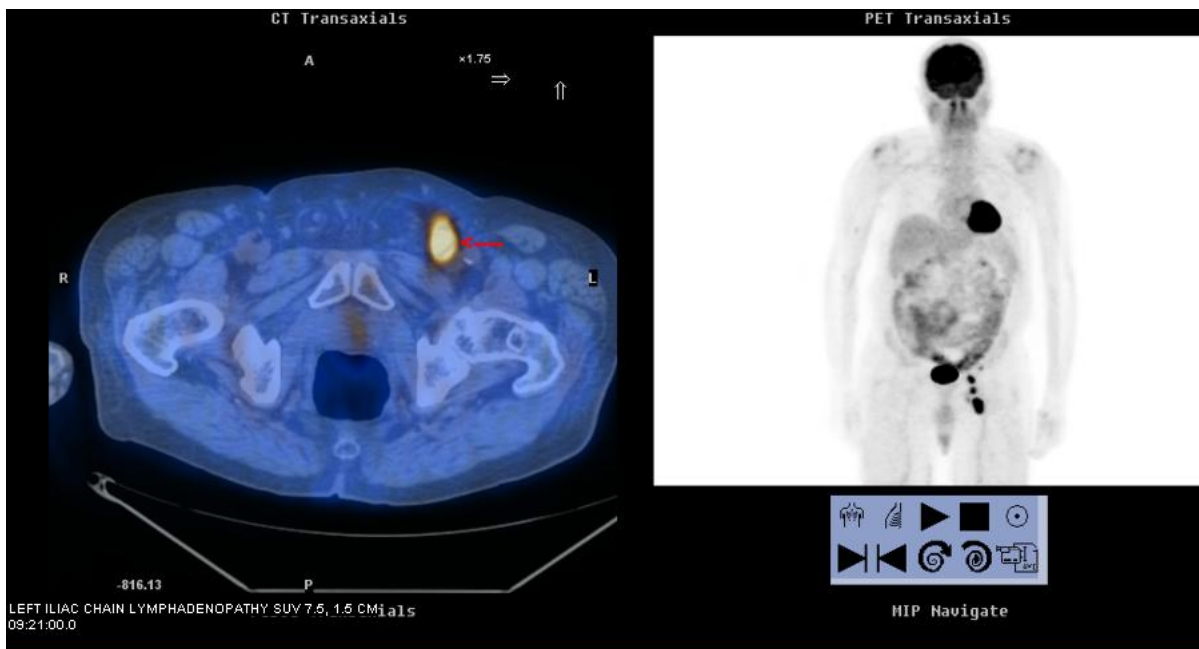


PETIMAGING

INTEGRATED PET/CT SCANNING CASE STUDY Nº 93

Initial Staging of Prostate Cancer

An 86 year old male presents with dizziness and syncope. **MRI** of the brain identifies three or four cutaneous or subcutaneous scalp lesions of unknown significance. A **bone scan** identifies increased activity in the lower lumbar spine and mid and lower thoracic spine, and a **chest x-ray** is negative. **CT** of the abdomen and pelvis reveals four soft tissue masses in the left inguinal and proximal left thigh, and correlation with **US** is recommended. **US** identifies multiple enlarged lymph nodes in the left groin which could represent either neoplasm or infection. The patient has an elevated PSA. A FNA reveals prostate cancer.



PET/CT, ordered to stage the prostate cancer, reveals hypermetabolic lymphadenopathy in the left iliac chain and the left groin extending into the left upper thigh with SUVs ranging from 3.3-13.6 and sizes 0.7- 2.4cm. As well, the soft tissue lesions seen by MRI in the head and neck are not FDG avid nor are the skeletal areas which were noted on the bone scan.